

The skeleton of the “Isle de  
Jean Charles.”

# Day 2

Complete the warm up activity. Study the photos and complete the activity the follows.

I can evaluate how political and economic decisions throughout time have influenced cultural and environmental characteristics of various places and regions.

# Warm Up

The Missouri River



# Warm Up

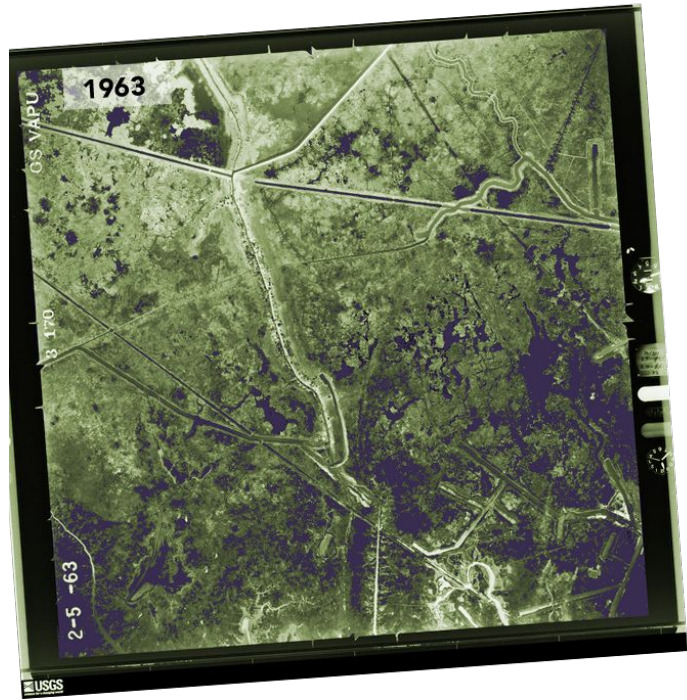
The Missouri River, Kansas City, MO



# Warm Up

Just north of Independence, MO is the Missouri River. It is an important feature is the Kansas City area. Some cities get water from the river. Boats carry supplies and goods up the river instead using roads. Back in the 1800's people used the road for travel. Maybe you have been to the Steamboat Arabia museum in Kansas City. Dams in North and South Dakota control how much water flows down the river.

Do you think the river has always followed the same path? Is such a big river capable of changing the route it follows? Can humans change the path of rivers?



Isle de Jeane Charles, 1963. All of the greenish area is land. Darker areas are water such as rivers and canals. Straight lines are roads.

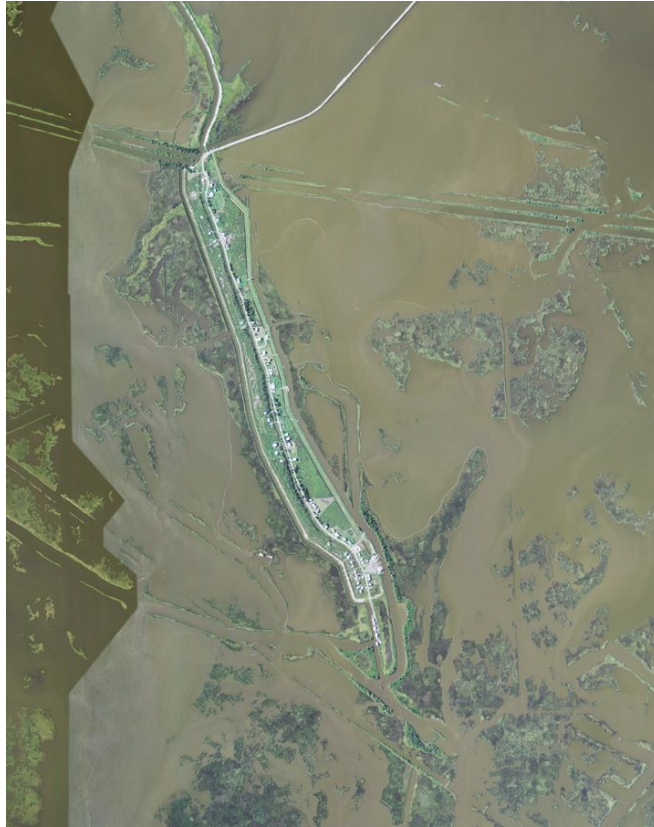


Isle de Jean Charles, 1993. Observe the brownish land and blue water. Straight lines are roads connecting islands. Why is the land shrinking?





Isle de Jean Charles, 1998. These narrow strips of water are canals that have been cut into the marshland to allow boats to get to oil wells.



Isle de Jean Charles, 2010. Observe the strip of land and surrounding bits of land. Do the canals around the island still exist?

# Practice

1. How did the amount of land of Isle de Jean Charles change over time? Get bigger or smaller? Wider or narrower?
2. What is one business that could exist in this area, based on the information presented in the pictures?
3. What do people do when their land gets swallowed up by the water?